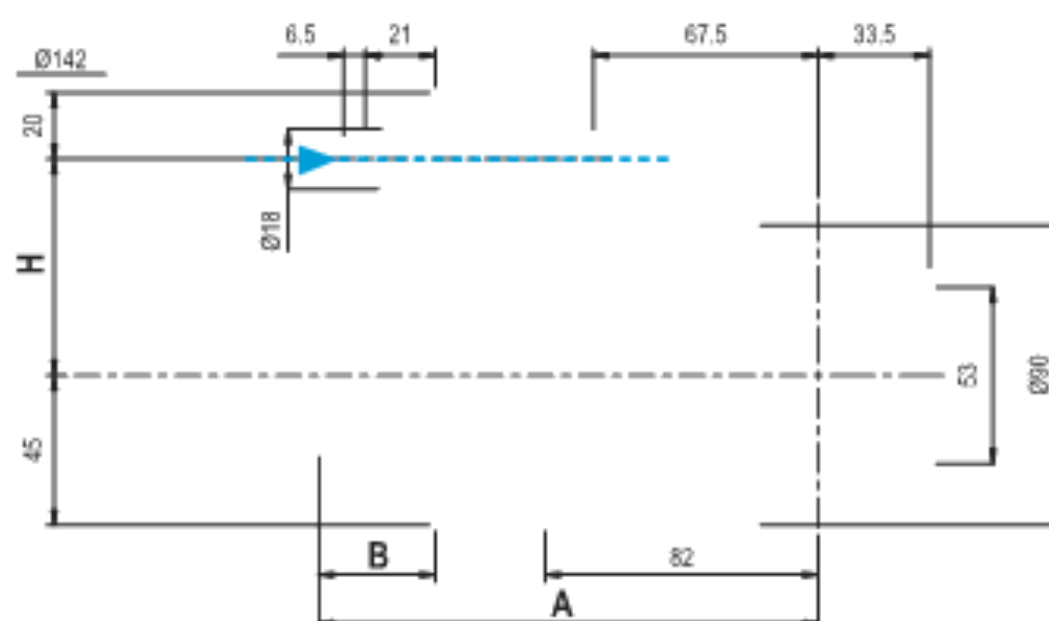



ANGLE HEADS WITH ADJUSTABLE ANGLES FROM 0° TO 90°

ITEM: GMU16 - GMU20

Body in sandblasted and chromed steel with high resistance. Main shaft with integral attachment shank (cemented, hardened and ground) to guarantee maximum rigidity. Each drive shaft is supported by a pair of angular contact bearings, preloaded in the ABEC 0 accurating rating and lubricated with lifetime grease. Spiral bevel gears made of high strength material, ground to guarantee lower heating and noise and high revolutions. Computerized calculation of the bevel gear pair (gleson): more teeth engaged, more output torque, greater number of working hours, almost no noise. Weight and reduced dimension compared to the corresponding models of the Evolution line. Double front seal (labyrinth + seal). External coolant supply via pin and internal pressurization included in the price (a). Options: internal coolant supply through the tool: 10 bar via rotating distributor (b) 30 to 70 bar by machine spindle, dry turning not possible (c) ReCool special nut to achieve coolant passage via tool even on heads that do not provide this option (d) High speed up to 10,000 rpm. Compatibility with the heads always installed (anti-rotation pin and identical stop blocks).



Tech. Code		Shanks	H mm	Output	Rpm. max	Ratio	A mm	B mm	Weight Kg		
C4901S4065ER25		SK40	65	ER 25	4000	1:1	150	35	6,8	1	
C4901S4080ER25			80								
C4901S5080ER25		SK50	80								
C4901B4065ER25		BT40	65				ER 32	156	41		13
C4901B4080ER25			80								
C4901B5080ER25		BT50	80	166	41						
C4901S5080ER32		SK50	80								
C4901B5080ER32		BT50	80								

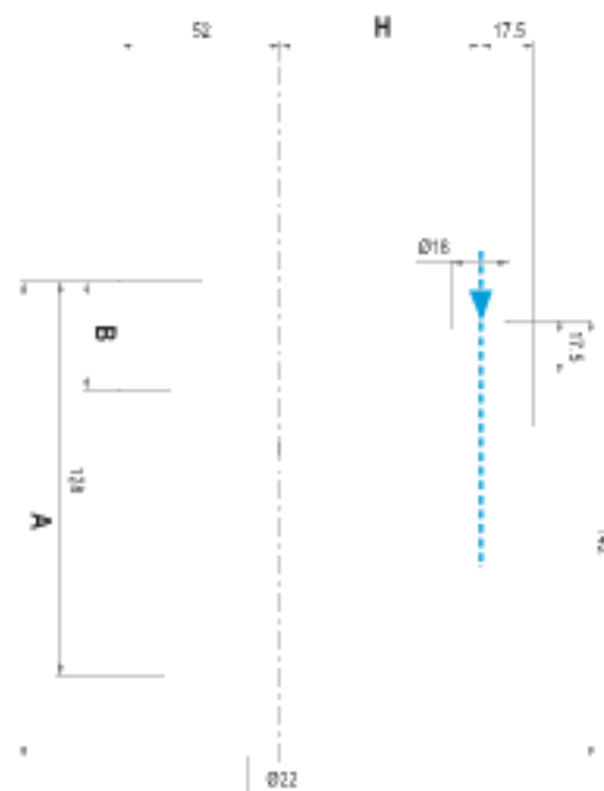
AUTOMATIC TOOL CHANGE - SENSE OF ROTATION CONTRARY TO THE SPINDLE


Supplied with stop-block, ER ring, service wrenches, grease tube and instruction book - in case

SPINDLE SPEEDERS

ITEM: GSS 10.HS - GSS 13

The compact construction, the components in heat treated steel, the ground gears on the involute allow the transmission of high power with excellent levels of silence. The spindle is supported by pre-loaded angular contact precision ball bearings that give it a greater strength of rigidity and rotation precision within mm. 0.01. Two planetary ground gears for high transmittable power. Special tool attachment on request (Komet, DIN 1835, etc...). Coolant supply through the standard or on-demand tool center. Special machine shank connection on request (Morse taper, DIN 69880, etc...). Interchangeable anti-rotating pin and therefore customizable by the customer. RPM spindle speeders can be mounted on traditional machines or with automatic tool changers. Lubrication is ensured with long-life synthetic grease which requires virtually no maintenance. Test certificate attached to each spindle speeder.



Tech. Code		Shanks	H mm	Output	Rpm. max	Ratio	A mm	B mm	Weight Kg	Kw	
C4910S4065ER16		SK40	65	ER 16	35000	1:8	155	35	6,8	8,5	1
C4910S5080ER16		SK50	80					42	8		
C4910B4065ER16		BT40	65					35	6,8		
C4910B5080ER16		BT50	80				163	50	8		
C4910S4065ER20		SK40	65	ER 20	22000	1:6	135,5	35	3,7	5,8	
C4910S5080ER20		SK50	80					42	6,5		
C4910B4065ER20		BT40	65					35	3,7		
C4910B5080ER20		BT50	80				143,5	50	6,5		

Supplied with stop-block, ER ring, service wrenches, grease tube and instruction manual - in case