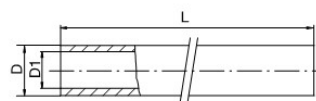
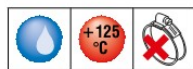


## Material EPDM - Push On Hose



Part No.	D1	D	L (m)	Colour	Working Pressure (Bar)	Burst Pressure (Bar)	Bend Radius	
PL10B-HT	10	16	50		28	112	80	1
PL10R-HT	10	16	50		28	112	80	1
PL13B-HT	13	20	50		28	112	100	1
PL13R-HT	13	20	50		28	112	100	1

**Tube:**

Black, smooth special rubber for high temperature.  
Our Push On fittings are recommended.

**Reinforcement:**

High strength synthetic textile braids.

**Cover:**

Red or blue, abrasion, and weathering resistant.

**Surface:**

Smooth fabric.

**Applications:**

Suitable for delivery of air, hot and cold water, and chemical products low with push lock fitting system.

**Temperature range:**

Up to +125°C (+257°F).

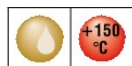
**Tolerances:**

UNI EN ISO 1307/97 tolerances for inside diameters up to and including 25 mm.

**On inside diameter:**

For I.D. 5.1 up to 20 mm  $\pm 0.80$  mm.  
Length tolerance:  $\pm 1\%$ .  
Standards: CNOMO E07.21.115.N.

## Material NBR



Part No.	D1	D	L (m)	Colour	Working Pressure (Bar)	Burst Pressure (Bar)	Bend Radius	
N10S	10	16.5	50		28	110	75	1
N13S	13	20	50		28	110	100	1

**Tube:**

Black, antistatic, smooth NBR rubber compound, resistant to Oil.

**Reinforcement:**

Polyvinyl alcohol (PVA).

**Cover:**

Black smooth CPE rubber compound.

**Applications:**

Designed for Oil mould temperature controlling.

**Temperature range:**

Working temperature: Up to +135°C (+275°F)  
peak up to +150°C (+302°F).

**Tolerances:**

UNI EN ISO 1307/97 tolerances for inside diameters up to and including 25 mm.

**On inside diameter:**

for I.D. 5.1 up to 20 mm  $\pm 0.80$  mm.  
Length tolerance:  $\pm 1\%$ .



See explanation of symbols on page 268